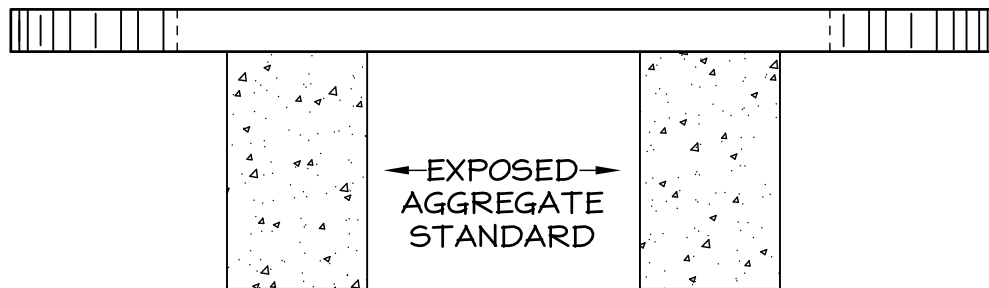


PLAN



ELEVATION

WEIGHT: 260#

CONCRETE SPECIFICATIONS

4000 f'c 28-DAY COMPRESSIVE STRENGTH
 4-7% ENTRAINED AIR
 MILD STEEL REINFORCING AS REQUIRED
 POLYPROPYLENE FIBER SECONDARY
 REINFORCING

FORMS

SMOOTH SURFACE FIBERGLASS

COLORS

GREY OR INTEGRAL COLOR (COHILLS COLOR
 PIGMENTS AVAILABLE)

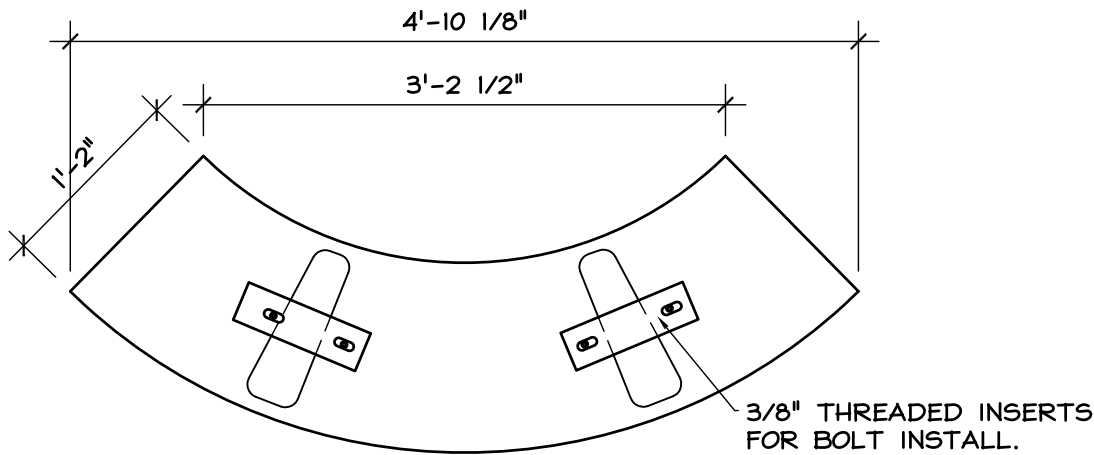
STANDARD FINISH

SMOOTH TOP
 EXPOSED AGGREGATE LEGS
 COLORED CONCRETE: COLOR SEAL TOP
 CLEAR SEALER

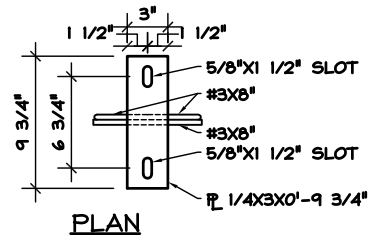
CIMARRON
 BENCH

BN-0048

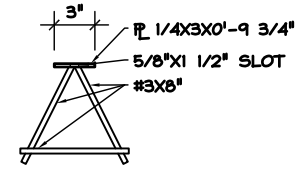
ARCHITECTURAL PRECAST CONCRETE
MATERIALS, INC.



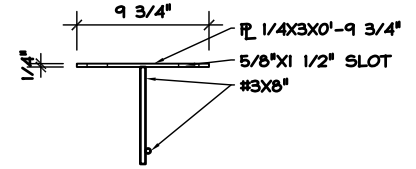
BOTTOM PLAN



PLAN

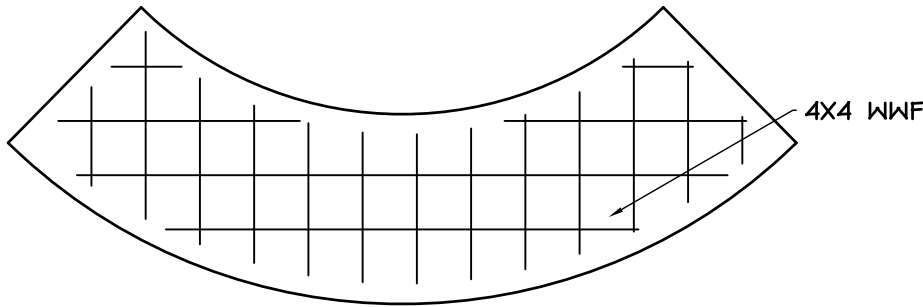


ELEVATION

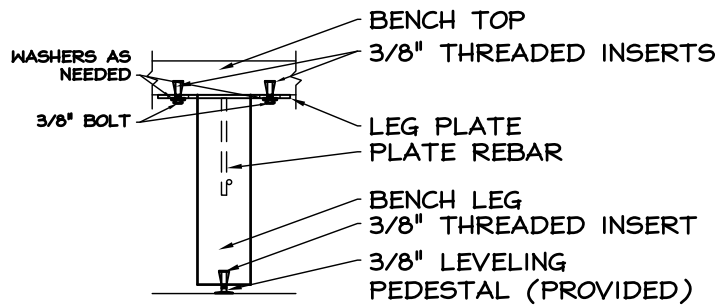


SIDE ELEVATION

LEG PLATE DETAIL



REINFORCING



LEG TO BENCH/LEVELING

WEIGHT: 260#

CONCRETE SPECIFICATIONS

4000 f'c 28-DAY COMPRESSIVE STRENGTH

4-7% ENTRAINED AIR MILD STEEL REINFORCING AS REQUIRED

POLY PROPYLENE FIBER SECONDARY REINFORCING

FORMS

SMOOTH SURFACE FIBERGLASS

COLORS

GREY OR INTEGRAL COLOR (COHILLS COLOR PIGMENTS AVAILABLE)

STANDARD FINISH

SMOOTH TOP
EXPOSED AGGREGATE LEGS
COLORED CONCRETE: COLOR SEAL TOP
CLEAR SEALER

CIMARRON
BENCH

BN-0048

ARCHITECTURAL PRECAST CONCRETE
MATERIALS, INC.