

CUT LIST:
 CONCRETE: 1.872 CU. YD.
 TOTAL APPROX. WEIGHT: 7270#
 4- 3/4" COIL LIFTING INSERTS
 9-#4X6"
 4-#4X10"
 4-#4X12"
 9-#4X5'-8"
 14-#4X6'-8"
 6-#4X7'-8"

NOTES

- 1) REFER TO PNM STANDARDS FOR ALL ELECTRICAL REQUIREMENTS.
- 2) EXISTING GRADE AND BACKFILL UNDER CONCRETE PAD SHALL BE COMPACTED TO 95% IN ACCORDANCE WITH ASTM D1557
- 3) CONCRETE COMPRESSIVE STRENGTH: 4000f'c
- 4) ALL #4 REBAR, GRADE 60 (ASTM A615)
- 5) 2" CLEARANCE ON REBAR UNLESS NOTED OTHERWISE.
- 6) 4-7% ENTRAINED AIR

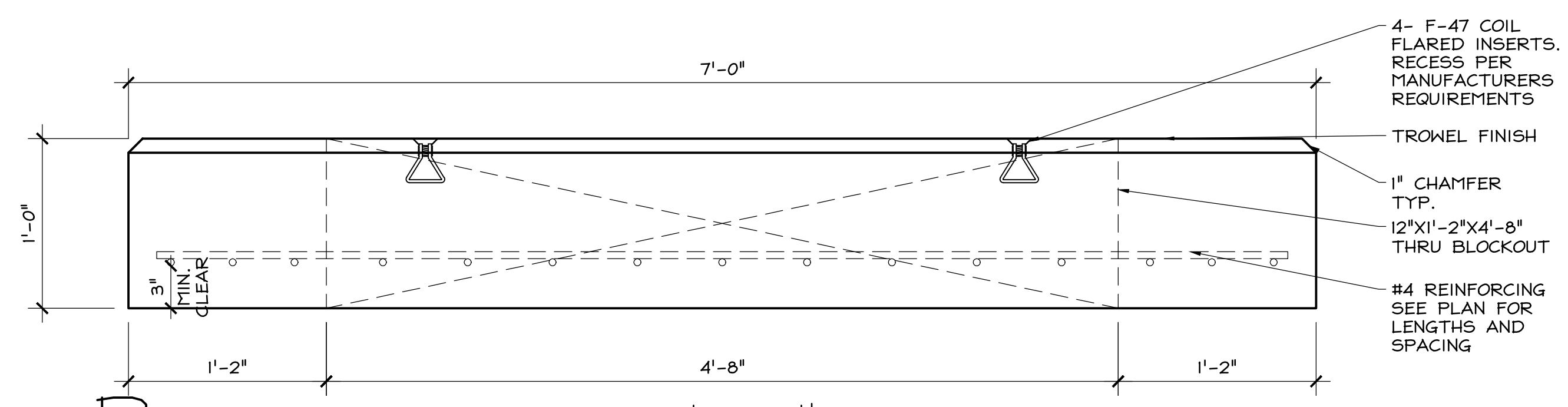
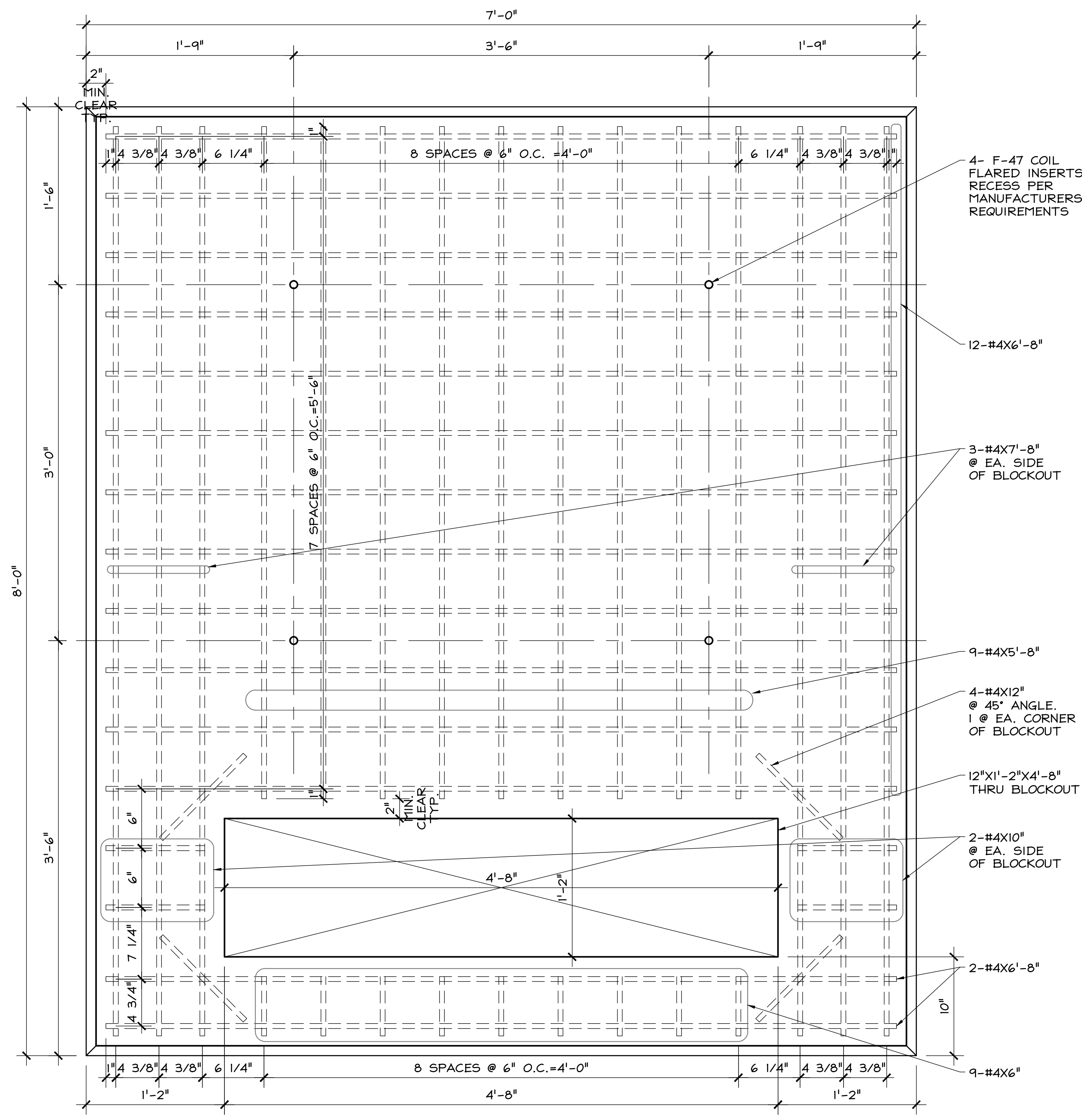
MATERIALS, INC.
 ARCHITECTURAL PRECAST CONCRETE
 A DIVISION OF BUILDLOGY

P.O. BOX 1507
 BERNALILLO, NM 87004
 PHONE: (505) 867-9035
 FAX: (505) 867-4419

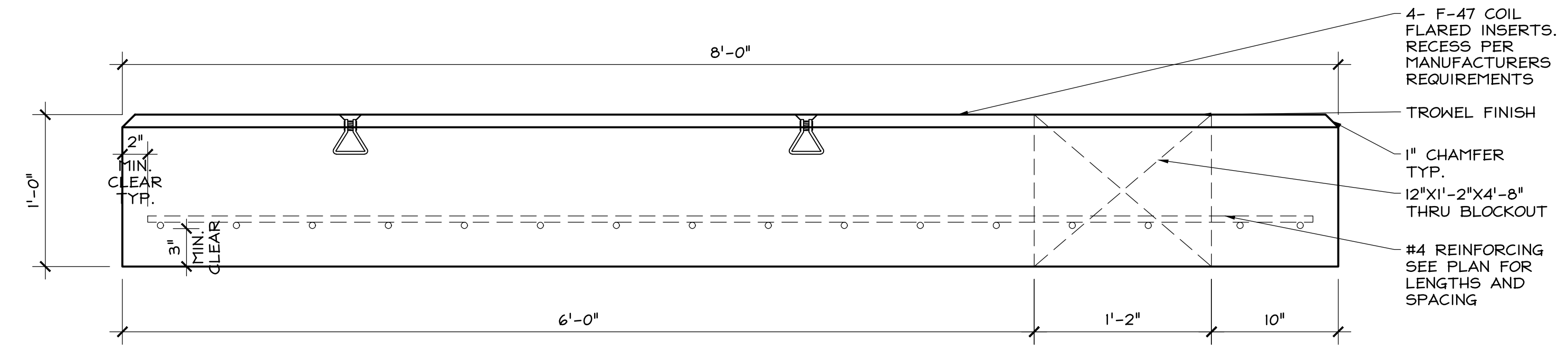
npca
 CERTIFIED PLANT

PNM 750-1500 KVA
 THREE-PHASE LOOP FED
 PRECAST TRANSFORMER PAD

PRODUCT CODE:
 TLF-9684



B ELEVATION: 6'-0" SIDE
 1 1/2" = 1'-0"



C ELEVATION: 8'-0" SIDE
 1 1/2" = 1'-0"

A PLAN
 1 1/2" = 1'-0"

REVISIONS:
DRAWN BY: JDE
REVIEWED BY: XXX
DATE: FEBRUARY 28, 2013
DESCRIPTION: PLAN VIEW & CROSS SECTIONS
SCALE: AS NOTED

3.0