

CUT LIST:
 CONCRETE: 1.354 CU. YD.
 TOTAL APPROX. WEIGHT: 5255#
 4- 3/4" COIL LIFTING INSERTS
 9-#4X6"
 4-#4X10"
 4-#4X12"
 9-#4X3'-8"
 6-#4X5'-8"
 10-#4X6'-8"

NOTES

- 1) REFER TO PNM STANDARDS FOR ALL ELECTRICAL REQUIREMENTS.
- 2) EXISTING GRADE AND BACKFILL UNDER CONCRETE PAD SHALL BE COMPACTED TO 95% IN ACCORDANCE WITH ASTM D1557
- 3) CONCRETE COMPRESSIVE STRENGTH: 4000f'c
- 4) ALL #4 REBAR, GRADE 60 (ASTM A615)
- 5) 2" CLEARANCE ON REBAR UNLESS NOTED OTHERWISE.
- 6) 4-7% ENTRAINED AIR

ARCHITECTURAL PRECAST CONCRETE
MATERIALS, INC.
 A DIVISION OF BUILDLOGY

P.O. BOX 1507
 BERNALILLO, NM 87004
 PHONE: (505) 867-9035
 FAX: (505) 867-4419



PNM 75-500 KVA
 THREE-PHASE LOOP FED
 PRECAST TRANSFORMER PAD

PRODUCT CODE:
 TLF-8460

REVISIONS:

DRAWN BY:

JDE

REVIEWED BY:

XXX

DATE:

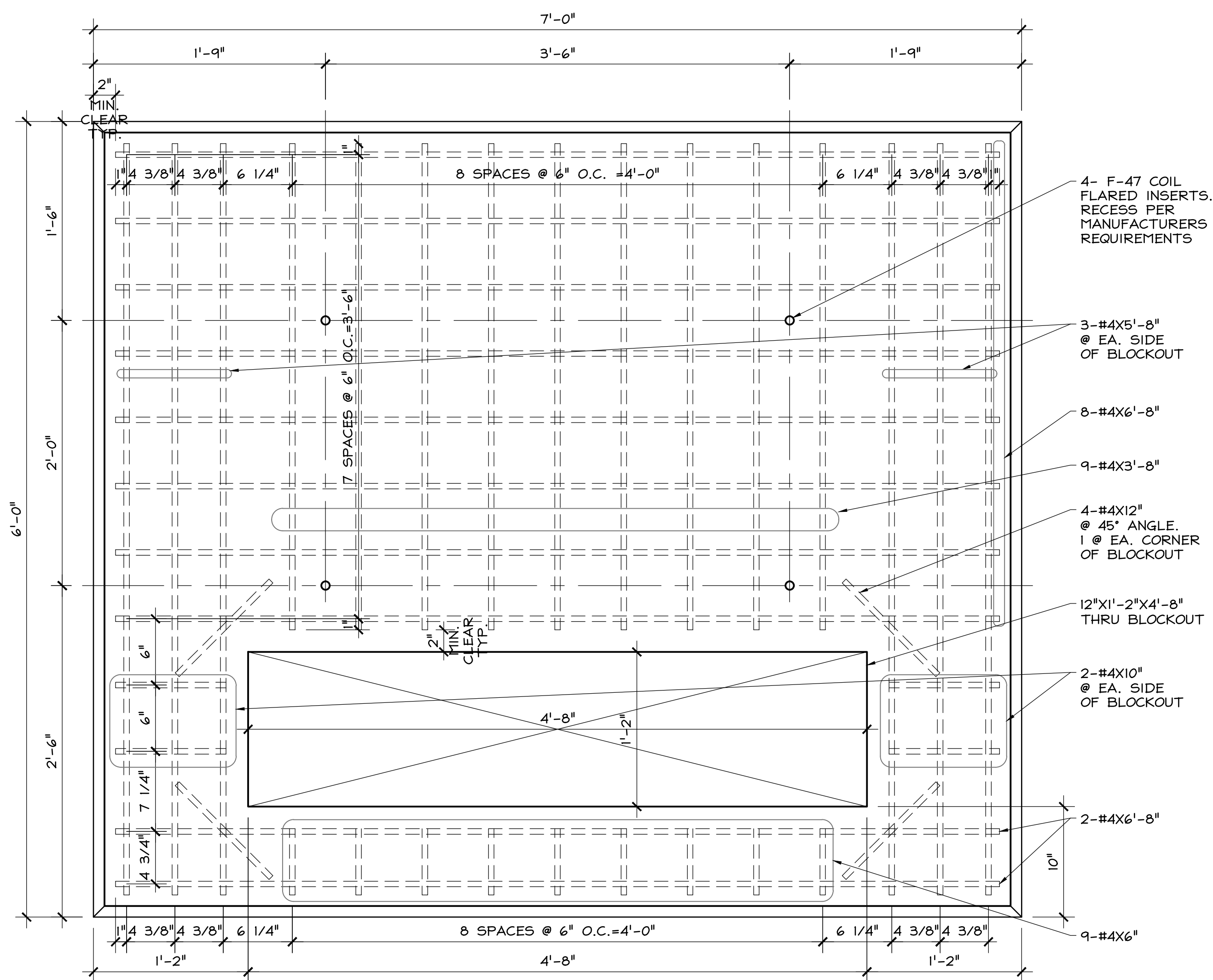
FEBRUARY 28, 2013

DESCRIPTION:

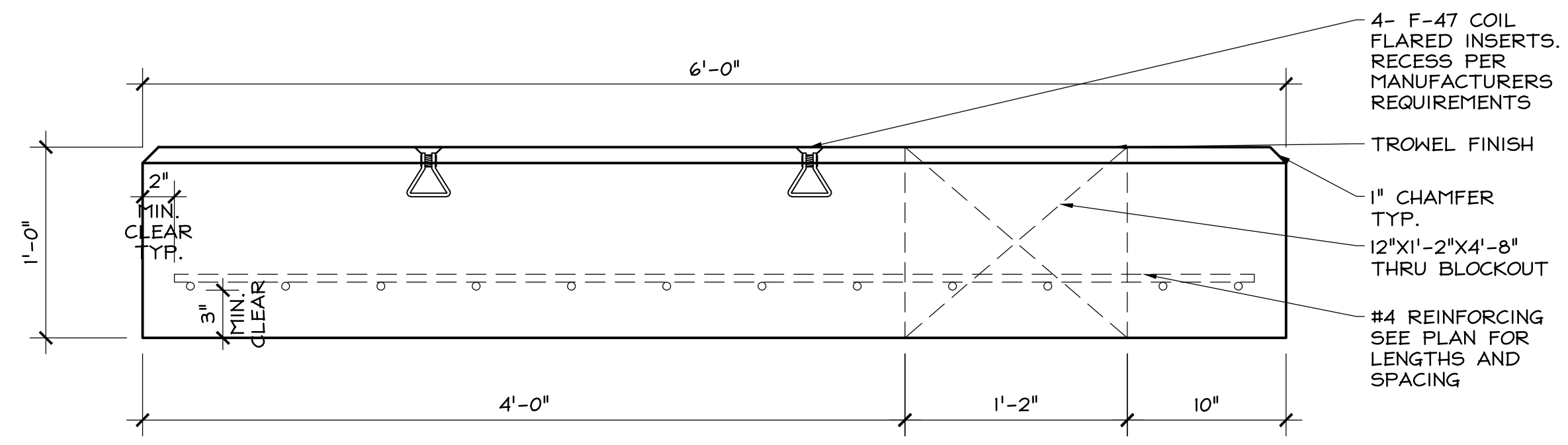
PLAN VIEW &
 CROSS SECTIONS

SCALE:

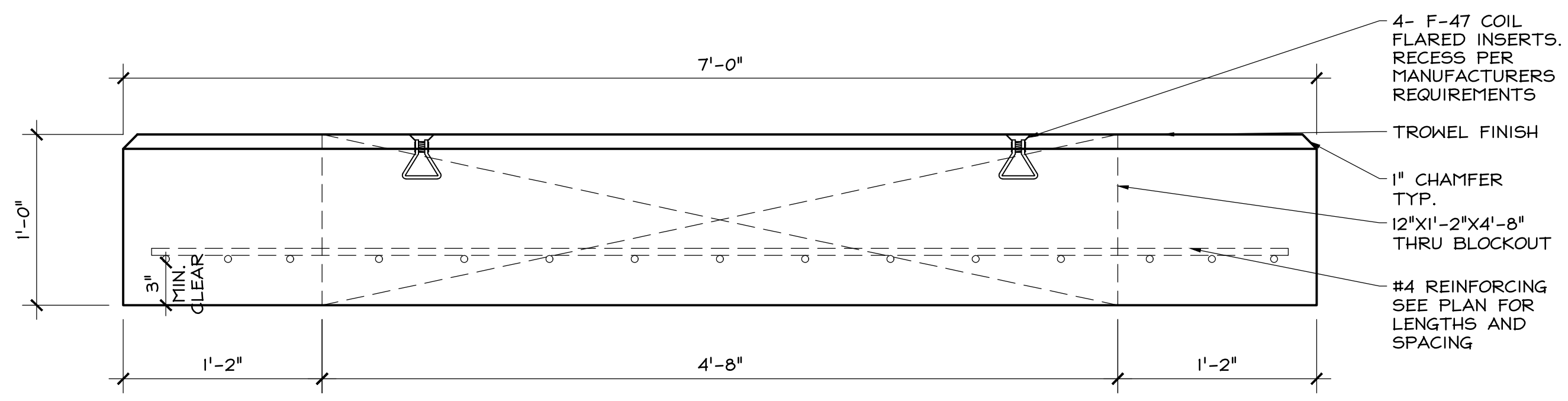
AS NOTED



A PLAN
 1 1/2" = 1'-0"



B ELEVATION: 6'-0" SIDE
 1 1/2" = 1'-0"



C ELEVATION: 7'-0" SIDE
 1 1/2" = 1'-0"

2.0