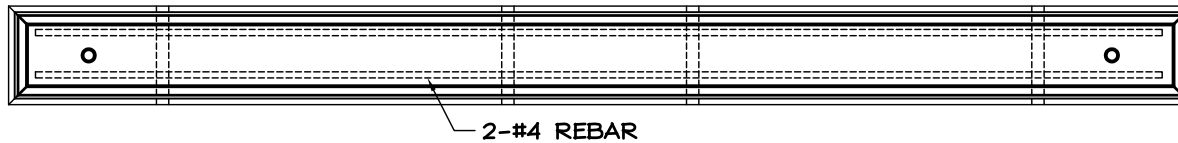


WEIGHT: 350#

STANDARD 8'-ELEVATION DETAIL



STANDARD 8'-PLAN DETAIL

CONCRETE SPECIFICATIONS

4000 f'c 28-DAY COMPRESSIVE STRENGTH
4-7% ENTRAINED AIR
MILD STEEL REINFORCING AS REQUIRED

FORMS

SMOOTH SURFACE FIBERGLASS

COLORS

GREY

FINISHES

SMOOTH AS CAST

8'-0"
PARKING BUMPER

ARCHITECTURAL PRECAST CONCRETE
MATERIALS, INC.